



*Get Wow'ed At First Look!*

**Casa Palazzo** the name itself defines the project i.e live life king style at your palace like home.

*World Class Amenities at a **Wow** Budget!*

*Go **WOW***  
everyday at  
*Casa Palazzo*

Wow your friends and family with your new home at Casa Palazzo. Enriched with world class amenities in an extremely pocket friendly budget, 1 and 2 BHK flats have everything you need. The attention to aesthetics is seen in the beautiful interplay of curvilinear detailing and straight line architecture in this 20 storey structure. The homes exude elegance and are pragmatic as well. These spacious residences have been built to facilitate a better lifestyle for you and your family. From the designer air-conditioned lobby, through the high speed elevators to the beautiful modern homes with Italian marble and wooden flooring and excellent wall finishes, the wow factor impresses throughout.

Casa Palazzo also features a modern fitness center on level 1 to cater to the fitness needs of its residents. Top of the line security systems allow you to breathe easy while modern parking systems take care of your vehicular concerns. Enjoy excellent connectivity and all conveniences of modern life in the vicinity. The affordability of Casa Palazzo has been brought about by intelligent design and planning without any compromise on the quality of construction, thereby bringing to you sturdy and spectacular homes.



## *Ace Designer Entrance Lobby*

Step into grandeur. Exquisitely designed by international architects and grand in every way, the lobby of the Casa Palazzo invites you into its plush and opulent interiors. Built to inspire pride and delight, this stunning air conditioned designer lobby is symbolic of your fine lifestyle. The grand lobby of Casa Palazzo signifies your prosperity and is classy beyond compare. It is the first of a series of many aspects of your home that impress. Our grand designer lobby complete with contemporary finish, is a result of conscientious planning and consideration of residents' lifestyle. Treat yourself to luxury and magnificence beginning from your new home at Casa Palazzo. The immense and gorgeous lobby designed alluringly and with use of unique charming aspects makes your arrival into your new home a delightful experience.



Step into the cool interiors of a chic and smart gym within your space. In addition to offering our lovely residents a luxurious lifestyle through our well planned and designed contemporary homes, Paradigm Realty encourages and supports a healthy lifestyle. As much as it is necessary to keep fit, it is also important that your fitness center is adequately equipped. Casa Palazzo hosts an easily accessible modern fitness center on the first floor. Well resourced and fully equipped with all modern apparatus, this trendy gym is pure bliss for fitness fans. With plenty of space, good ventilation and inspiring ambience to encourage and motivate, you would happily visit this space repeatedly not only to keep fit but for the good feeling it leaves you with after a good workout session.

## *Fitness Centre*

Presenting to you, an amazing technologically advanced parking system for your prized possessions. In a city like Mumbai which faces severe space crunch, Casa Palazzo ensconces your cars safely and securely within its modern and convenient car parking system. Keeping our dear residents' comfort and peace of mind at priority, we have made custom designed puzzle and stack car parking available at Casa Palazzo. This automated multi level car parking system offers the residents a very convenient solution to parking issues. Another advantage of this mechanized system is the creation of an abundance of free space for the facility of the residents. With a dedicated space for your vehicle and assured safety you can relax and enjoy your stay in the wonderful and beautiful Casa Palazzo.

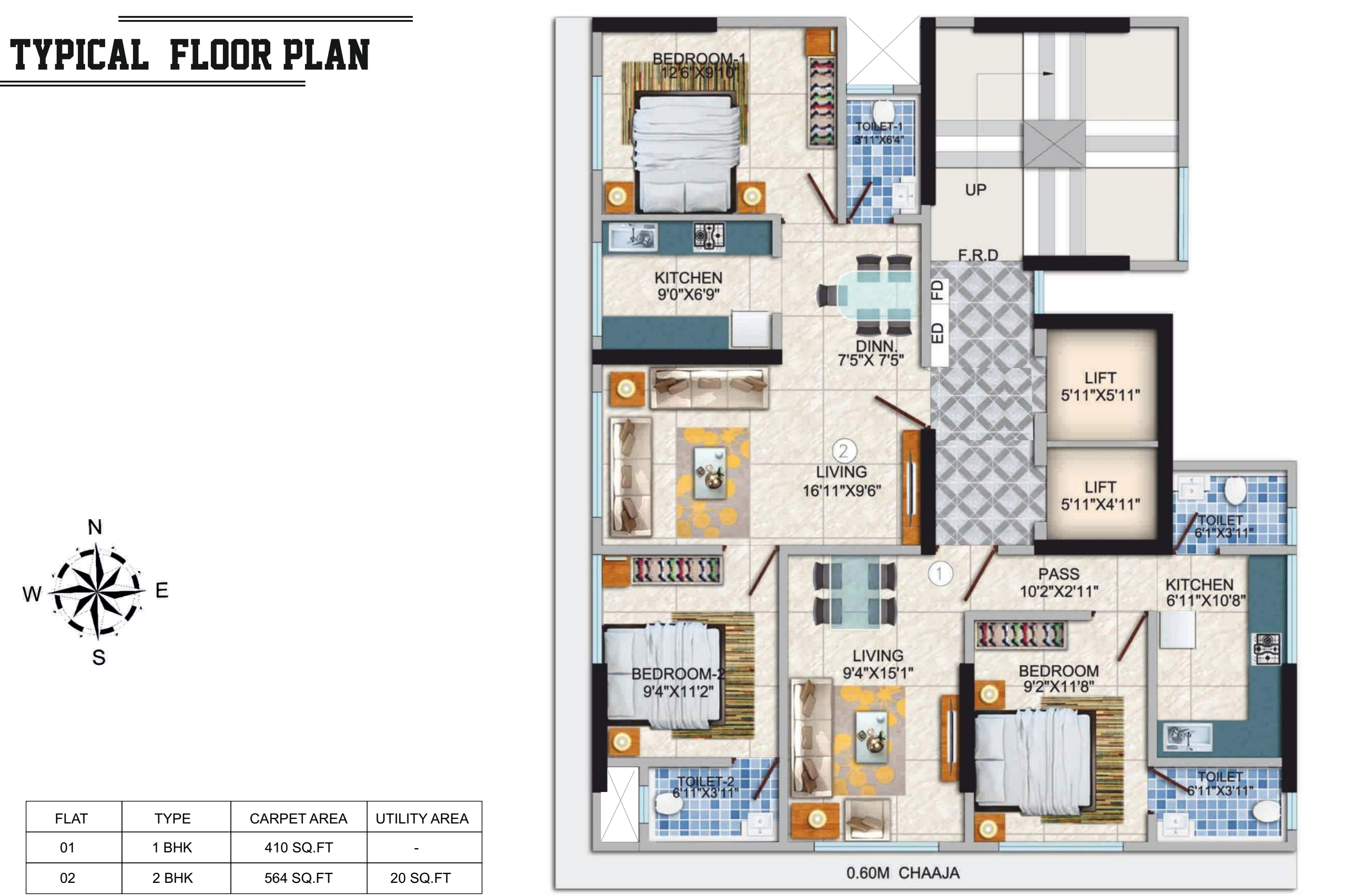
## *Multi Level Car Parking*



# GROUND FLOOR PLAN



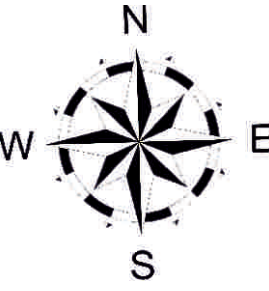
# TYPICAL FLOOR PLAN



**Disclaimer:** Floor Plan measurements are approximate and are for illustrative purposes only. While we do not doubt the floor plans accuracy, we make no guarantee, warranty or representation as to the accuracy and completeness of the floor plan. You or your advisors should conduct a careful, independent investigation of the property to determine to your satisfaction as to the suitability of the property for your space requirements.

**Disclaimer:** Floor Plan measurements are approximate and are for illustrative purposes only. While we do not doubt the floor plans accuracy, we make no guarantee, warranty or representation as to the accuracy and completeness of the floor plan. You or your advisors should conduct a careful, independent investigation of the property to determine to your satisfaction as to the suitability of the property for your space requirements.

# JODI PLAN OPTION - 3BHK



FLAT	TYPE	CARPET AREA	UTILITY AREA
01	3 BHK	974 SQ.FT	20 SQ.FT

## Connectivity

Apart from all the internal features that makes living at Casa Palazzo an everyday pleasure; enjoy the excellent connectivity it offers. Situated on prime Carter Road No 3, Casa Palazzo is surrounded by all the conveniences of life. One can easily access hospitals, schools, shopping centres, retail space, jewelry boutiques, entertainment avenues, banks and much more within a few minutes. Casa Palazzo enjoys the advantage of being located within 1km distance from the Borivali Railway Station on one side and Western Express Highway on the other. The Sanjay Gandhi National Park is located at an approximately 1.5km from Casa Palazzo.

**Sanjay Gandhi National Park – 1.5km**  
**Borivali Station – 1km**  
**Western Express Highway – 1km**

**Disclaimer:** Floor Plan measurements are approximate and are for illustrative purposes only. While we do not doubt the floor plans accuracy, we make no guarantee, warranty or representation as to the accuracy and completeness of the floor plan. You or your advisors should conduct a careful, independent investigation of the property to determine to your satisfaction as to the suitability of the property for your space requirements.



*The New is Here!*



IN COLLABORATION WITH



MARKETED BY



**Sweet  
Home  
Realty**

**MANOJ 98673 33367  
IRFAN 98673 33555  
OFFICE 022 2893 3555**

**SITE OFFICE** : CASA PALAZZO, Khatavwadi, Near Amba Mata Chowk, Opp kabutar Khana, Behind Gopalkrishna Hotel, Carter Road No. 3 Borivali ( E ) Mumbai 400066

**HEAD OFFICE** : Paradigm Realty, G-52, 2nd Floor, Roop Mangal, Corner of 16th Road, Main Avenue, Santacruz ( West ), Mumbai - 400054

**CONTACT** : **+91 82912 92111**

**WEBSITE** : [www.paradigmrealty.co.in](http://www.paradigmrealty.co.in)

**E-MAIL** : [info@paradigmrealty.co.in](mailto:info@paradigmrealty.co.in)

**Disclaimer:** The developers reserve the right to change or alter the plans, specifications, designs, elevations, feature, amenities, facilities, services, payment-plans and pricing without prior notice or obligation, at their sole direction and subject to approval of government authorities. All specifications, internal layout, renderings, project status, completion status, floor plans, pictures and maps in this booklet are for representational purposes only and not actual depiction of the building, its walls, roadways and landscaping.